

GENERAL NOTES RE: FINISHES

1. ALL RIGID FRAMES, PIPES, EXPOSED STEEL SHALL BE PAINTED IN DEEP TONES AS SELECTED BY INTERIOR DESIGNER. DEEP TONES SHALL BE MADE OPAQUE BY PRIME WITH OPAQUE WHITE FOLLOWED BY TWO COATS OF THE DEEP COLOR. FINAL COAT MAY NOT BE TRANSPARENT.

2. PIPES - COLOR CODE ALL EXPOSED PIPES ACCORDING TO IDENTIFICATION OF PIPING SYSTEMS PUBLISHED BY THE AMERICAN STANDARDS ASSOC.

FINISHES LEGEND

F = FLOOR MATERIAL V = WALL MATERIAL C = CEILING MATERIAL

FLOORS

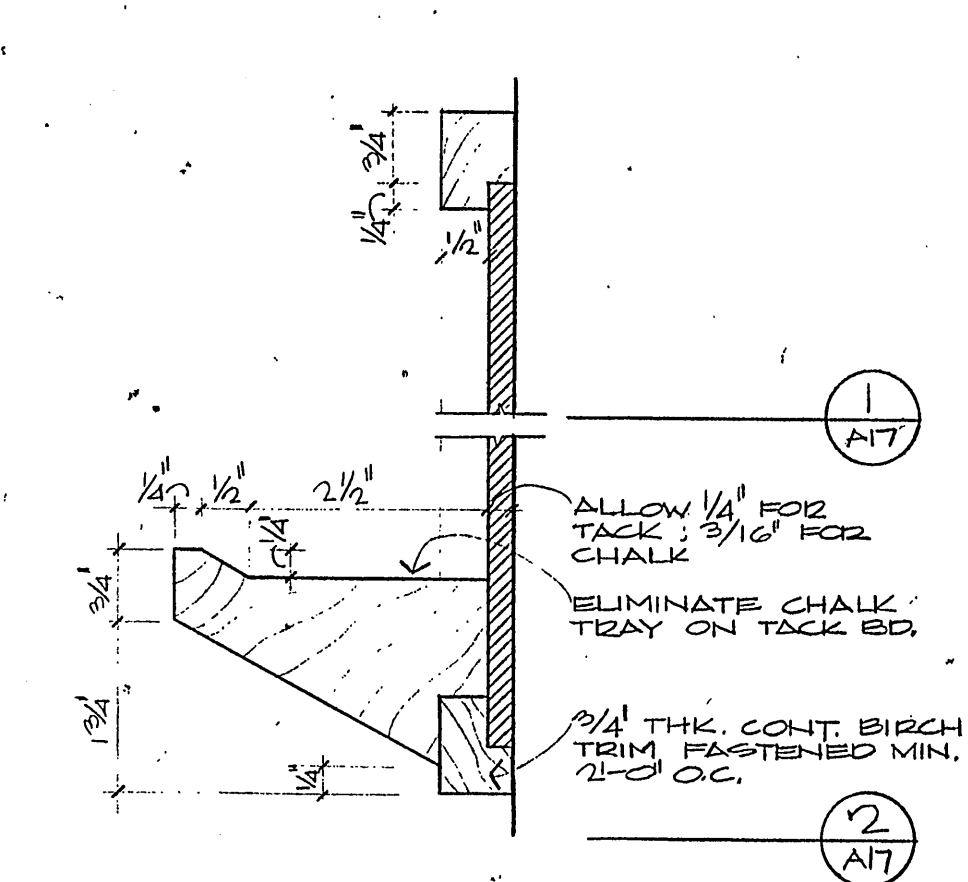
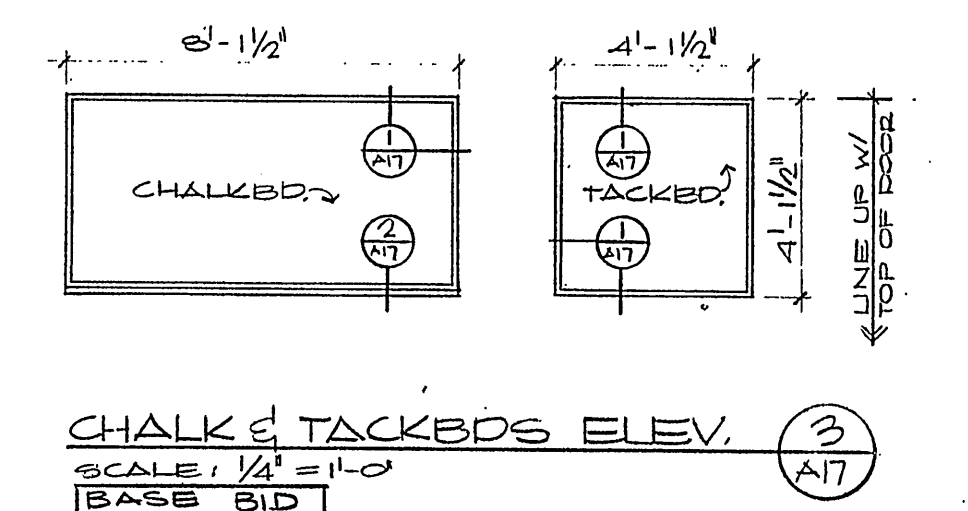
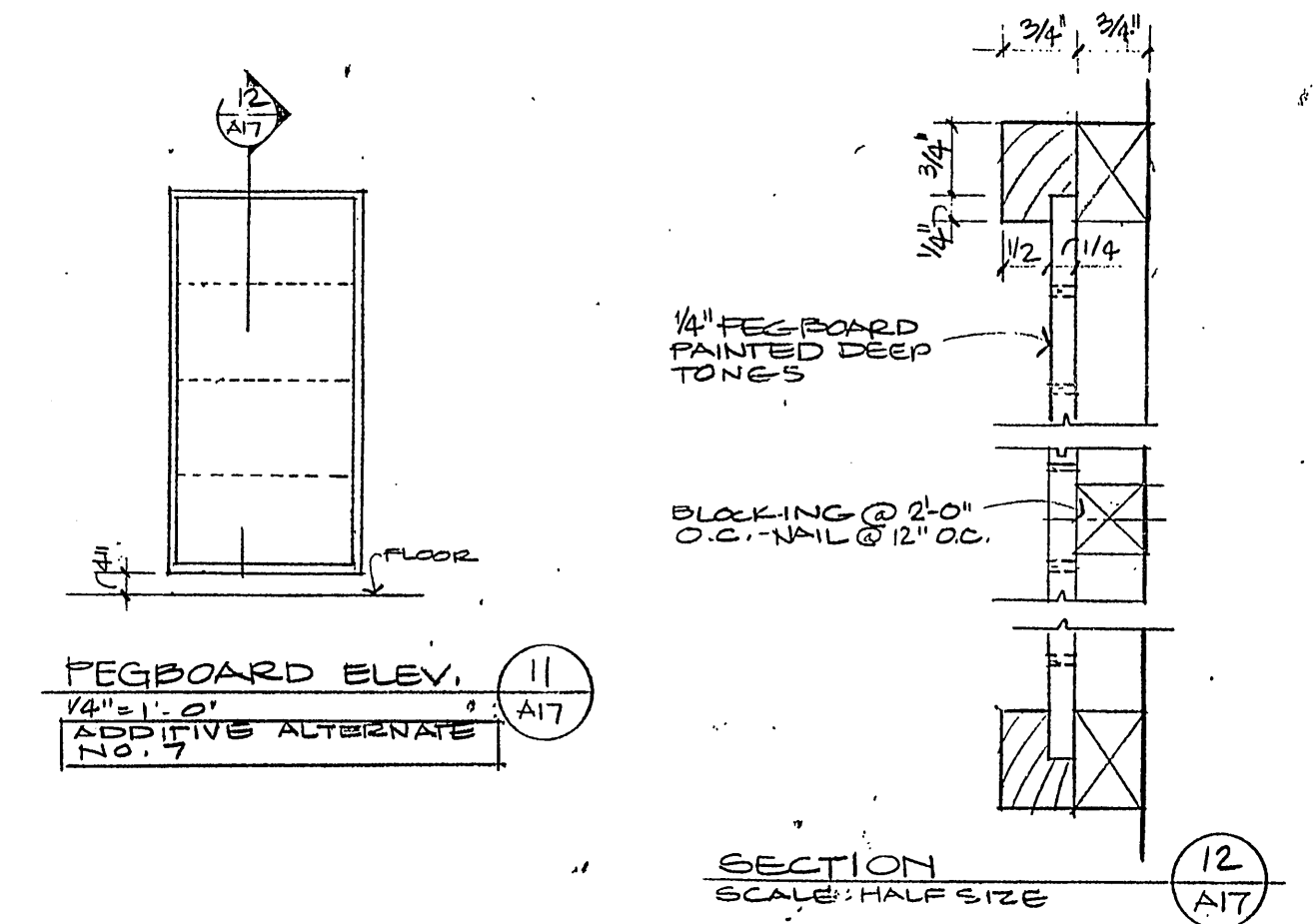
F - CONC. HDNR = CONCRETE WITH HARDENER
F - VAT. VCB = 1/8" GA. VINYL ASBESTOS TILE / VINYL COVE BASE 4"

WALLS

V - CB - EPT = CONCRETE BLOCK - EPOXY PAINT
V - CB - EPT - LPT = CONCRETE BLOCK - EPOXY PAINT TO TOP DOOR FRAMES (REG. DRS, NOT CH. DRS)
LATEX PAINT ABOVE
V - CB - EX = CONCRETE BLOCK - EXPOSED
V - EX - ST - PT = EXPOSED STEEL - PT DEEP TONES - HIGH GLOSS ENAMEL
V - SB - NF = SOUND RETENTION BLOCK - NO FINISH

CEILING

C - AC = 24" X 24" ACOUST. TILE
C - GB - PT = 5/8" TYPE "X" GYPSUM WALL BOARD PAINTED
C - VGB - PT = 5/8" TYPE "X" WATER RESISTANT GYPSUM WALL BOARD PAINTED
C - CD - NF = CONCRETE DECK, NO FINISH
C - EX - ST - PT = EXPOSED STEEL PAINTED



SECTIONS THRU CHALK AND TACKBOARDS
SCALE: 1/2" = 1'-0"

webster baldwin daly rohman
architects engineers
bangor, maine
1494
N.M.V.T. SHOP
PRESQUE ISLE MAINE
KEY PLAN
NO. REVISION DATE
1. COLORS ADDED 1-82
DESIGNER HWD/SBE
ENGINEER AS
DRAWN BY EAB
CHECKED BY HWD
DATE: JUNE 1, 1981
FINISHES AND REFLECTED CEILING
LOWER LEVEL
NORTH
A17